

Liquid Dosing System



APEC - Automated Process Equipment Corporation



Description

A compact cabinet with everything needed for applying micro liquids into your continuous flow process.

Advantages

- Space saving design.
- Standard NEMA enclosure can be floor standing, wall mounted or mounted on the optional tote support stand.
- **Plug & play installation.**

Features

- Overflow/drip pan with proximity switch located in the bottom of the enclosure.
- 5 gallon plastic work tank with removable cover, overflow pipe to the overflow/drip pan, high level and refill proximity switches.
- Pumping components mounted on a common back plane. Includes inlet strainer, flow switch, variable speed metering pump sized for your application, back pressure valve, check valve and pressure gauge.
- Internal light assembly.
- Heated cabinet.
- Exterior refill and discharge liquid NPT fittings for field connection.
- Internal electrical termination.
- All components shop wired and plumbed for easier field installation.
- Shop tested prior to shipment.
- Coriolis liquid flow meter and transmitter mounted to the back plane.
- Plexiglas pane in the enclosure door for viewing the liquid meter transmitter.

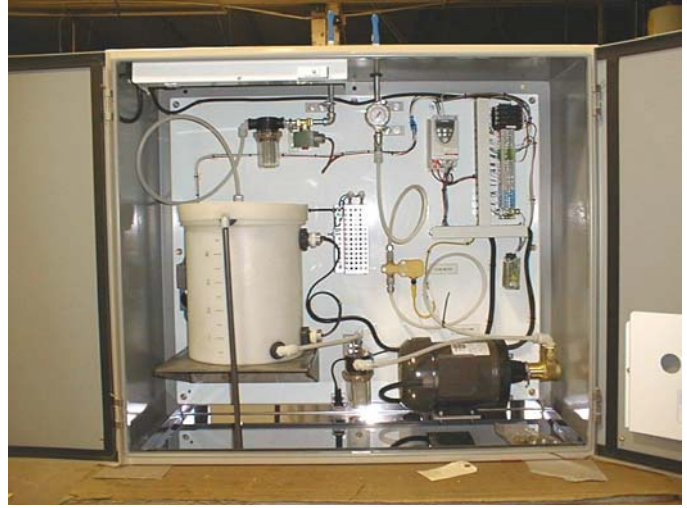


APEC - Automated Process Equipment Corporation

1201 North Fourth Avenue
Lake Odessa, Michigan 48849

Phone: 616-374-1000
Fax: 616-374-1010

Email: sales@apecusa.com
Website: www.apecusa.com



Options

- Support stand to accommodate 275 gallon basket style totes.
- Platform scale for inventory reconciliation or level indication.
- Larger enclosure for adding a second liquid.
- 275 gallon tote and components in an enclosed housing.
- Water addition cabinet for enzyme systems.
- Multiple liquid manifold enclosure factory wired & plumbed. Placed next to your liquid application equipment. Mixes and introduces multiple liquids into one application connection point.
- Heat blanket for 275 gallon tote when the liquid dosing system is placed in a “cold” area of your facility.

Contact APEC Today For Your Liquid System Cabinet Needs

Phone: 616-374-1000

Fax: 616-374-1010

Sales—sales@apecusa.com

<http://www.apecusa.com>