

# *Mistcoater Liquid Applicator*



***APEC - Automated Process Equipment Corporation***



## **How It Works**

The product to be coated enters into the machine and falls onto a rotating “dry disk”. The material falls off the dry disk in a cascading helical pattern. Simultaneously, the liquid is pumped onto spinning disks located in the center of the cascading product. This liquid is atomized and flung out into the falling dry material. Internal scrapers prevent product build up on the walls of the coating chamber. An optional twin screw ribbon and paddle conveyor gently mixes, provides retention and allows the product to rub against one another which further increases the quality of the coating.



## **Advantages**

Multiple liquids can be applied through one inlet point. Fat and Enzyme, Enzyme and Water, Fat and Flavorings, Fat and Digest etc.

**No spray nozzles that clog**

Less head pressure required of your liquid pumps due to no liquid inlet restriction

Combine with a powder feeder for tack application of Digest, Gravy, Whey etc.



## **2 Models To Choose From**

“T” - Coating chamber with discharge chute

“TMX” - Coating chamber with twin screw ribbon and paddle mixing conveyor

***APEC - Automated Process Equipment Corporation***

1201 North Fourth Avenue  
Lake Odessa, Michigan 48849

Phone: 616-374-1000  
Fax: 616-374-1010

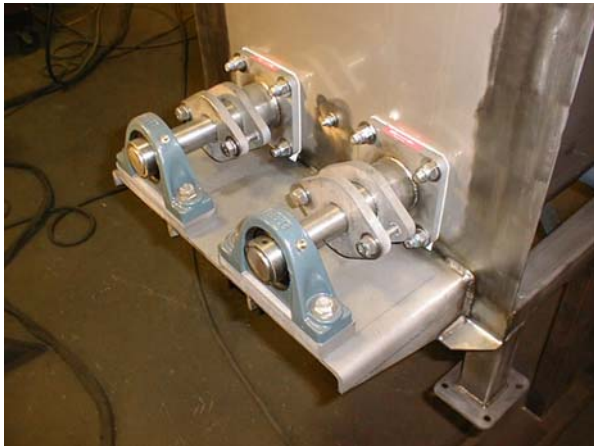
Email: [sales@apecusa.com](mailto:sales@apecusa.com)  
Website: [www.apecusa.com](http://www.apecusa.com)



**Available in Mild or Stainless Steel Construction**

### **Available Sizes and Capacities**

- 5 Ton** - 250 cu. ft. per hour
- 20 Ton** - 1,000 cu. ft. per hour
- 40 Ton** - 2,000 cu. ft. per hour
- 70 Ton** - 3,500 cu. ft. per hour
- 120 Ton** - 6,000 cu. ft. per hour



### **Available Options (most common in red)**

- Close Tolerance Construction
- Adjustable Mixing Paddles
- Keep Full Level Sensor**
- Dual Mixing Conveyor Drive Arrangement**
- CEMA IV or Food Grade Finish
- Steam Tracing**
- 50 Hz Motors
- Explosion Proof Motors
- Washdown Duty Motors and Reducers
- Corrosion Resistant Bearings
- Mixing Conveyor Extensions
- Clean In Place Spray Manifold And Drains
- Insulated Mixing Conveyor Cover
- Hinged Grating Mixing Conveyor Sub Cover
- Inlet Lexan Viewport
- Spray Plenum In Place Of Coating Chamber
- Multiple Liquid Disks**
- Liquid Disk Swing Out Assembly Allows Easy Access



**Contact APEC Today For Your Mistcoater  
Liquid Applicator Needs**

**Phone: 616-374-1000**

**Fax: 616-374-1010**

Sales—sales@apecusa.com

<http://www.apecusa.com>