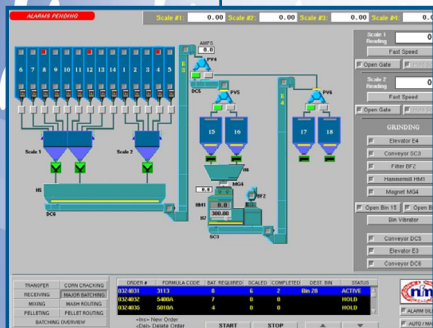


BATCH CONTROL SYSTEM



- PC Based
- QNX4 Operating System
- Designed for Reliable Operation
- Multi-Tasking Environment Allows For Simultaneously Opened Control Screens
- Ethernet or Fiber Optic Network
- Easily Interfaced to Windows Systems

Utilizes Off The Shelf Components So You Are Not Held Hostage By APEC For Parts and Service.

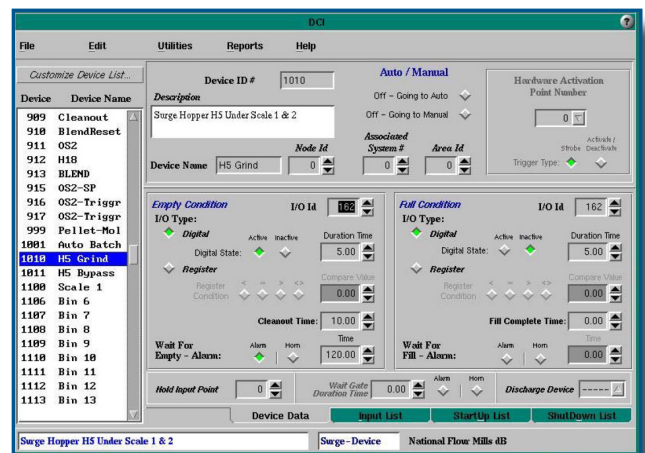
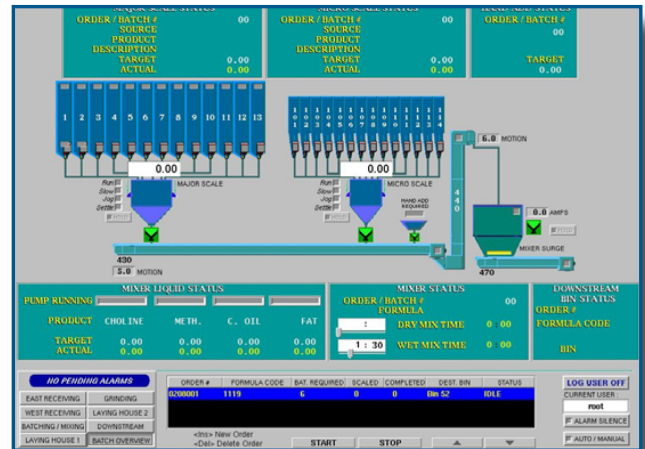
- Industrial Computers for Factory Environments
- Allen-Bradley or Opto22 I/O
- Easily Expanded to Multiple Stations
- Remote Access to Applications From Windows Systems via Network
- Optional Barcode Scanning for Ingredient Confirmation



BATCH CONTROL SYSTEM SPECIFICATIONS

Real Time Graphical Display

- See At a Glance:
 - What Formula is Running
 - Current Ingredient Being Weighed
 - Target Weight and Actual Weight
 - Desired Mix Time (Wet and Dry)
 - Expired Mix Time
 - Status of Liquid Pumps and the Hand Adds
- Devices Shown on the Screen Change Color as the Status of Each Device Changes.
- Shows Any Alarm Conditions
- Auto or "Point and Click" Manual Operation
- Communicates With Other Plant Equipment/Processes
- Device Control Eliminates Custom Program Languages
- Device Library For Each Device You Have in the Process
- Also Contains Associated I/O Points and Parameters Associated With That Equipment:
 - Analog Values for Amps and Speed
 - Timing Parameters for Clean Out, Startup and Shutdown
- Equipment Sequence and Process Timing Can Be Easily Adjusted in the Field Without Custom Programming.
- Easily Support a Variety of Control Algorithms Such as Loss In Weight, PID Loop Control and Rate Control for Ingredient Hoppers and Other Transitional Devices.



Other Features

- Ingredient and Formula Entry
- 2 Available Database Choices
 - Standard—Standard Reports. Store 45 days of Transactions.
 - SQL—Greater Reporting Capabilities. Ability To Store 1 Year's Worth of Transactions.
- Report Generation
 - Ingredient Usage—Daily, Weekly, Monthly or Custom
 - Production Totals—Daily, Weekly, Monthly or Custom Alarms
 - Production Summary By Batch or Run
 - Receipts
 - Storage Levels
- Lot Tracking