

THE COMPLETE GUIDE TO

# Wet/Dry Microingredient Cattle Feed Machines



**APEC**

Automated Process Equipment Corporation



# INTRODUCTION

---

Automation has revolutionized all types of industries. Automated systems provide more accuracy, greater speed, improved safety, and increased precision for the cattle industry as well. A micro mixing automated cattle feed machine offers cattle ranchers and feedlot managers the ability to increase the efficiency and cost-efficiency of their operation dramatically. In this guide, we'll show how the CattlePro automated feed mixer works, what benefits it provides, and how you can add it to your operation.

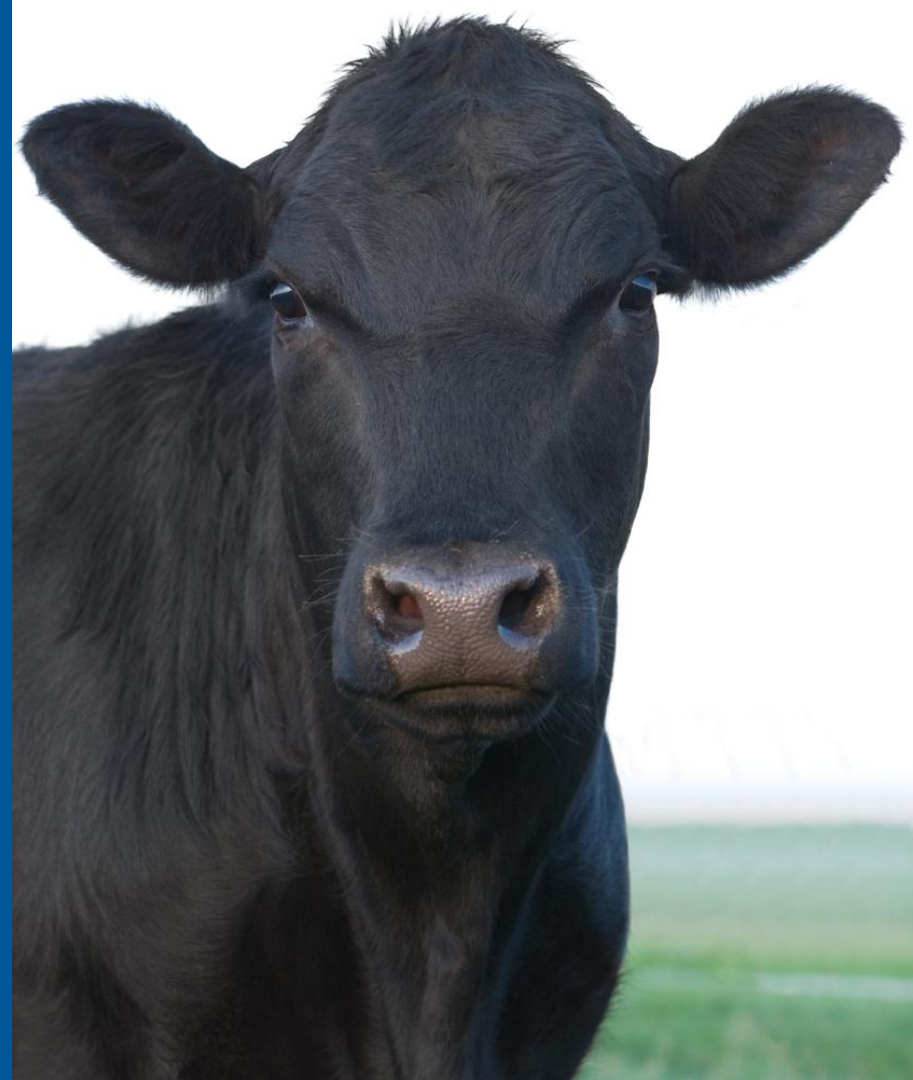
# TABLE OF CONTENTS

---

- 4. Overview: What Can the CattlePro Do?
- 6. How Does the CattlePro Work?
  - 8. No Contracts
  - 9. Accuracy
  - 10. Cost-Savings
  - 11. Safety
  - 12. Speed
  - 13. Easy to Implement
  - 14. Easy to Clean
- 15. Conclusion

OVERVIEW:

# What Can the CattlePro Do?



# Overview: What Can the CattlePro Do?

---

What can the CattlePro do? We'll discuss each of these aspects in more detail throughout the guide, but let's take a quick look:

- ▶ **No Contracts:** Using an independent cattle feed mixing machine, you will not be tied to a contract with a drug company or an exclusive supplier, so you can choose the best equipment supplier and best drug supplier.
- ▶ **Accuracy:** By accurately weighing and mixing carrier and active ingredients in feed, the CattlePro removes guesswork and inaccuracies.
- ▶ **Cost-Savings:** With accurate ingredient mixing and no exclusive contracts, you can buy cattle feed additives and drugs wholesale. The accuracy of the system and its design also helps to avoid waste.
- ▶ **Safety:** Automatic mixing in an enclosed machine helps to remove risks to workers, including dust inhalation, repetitive stress injuries, and injuries from contact with a mixer.
- ▶ **Speed:** With no need to hand-add, weigh, or measure ingredients, you can mix feed much faster.
- ▶ **Easy to Implement:** The CattlePro is pre-plumbed, pre-wired and pre-programmed, making installation fast and easy.
- ▶ **Easy to Clean:** The CattlePro's modular construction makes cleaning easy. The flush hopper and conveyor can be separated from the machine, cleaned, and easily reattached.

How Does the  
CattlePro Work?



# How Does the CattlePro Work?

The CattlePro is a complete, automatic cattle feed mixing system. Our engineers designed the automated mixing, weighing and dispensing system to easily and exactly combine micro, macro and trace ingredients, including liquid and dry ingredients. Using a selection of bins, weighing instruments, and feeders customized to suit your ingredient mix, the CattlePro measures the appropriate amount of ingredients into a mixer. A controller coordinates each of these processes, and ensures that all ingredients are measured accurately.

This system provides a number of advantages. You can feed your beef cattle faster, reduce costs, and maintain a cleaner, safer operation. With no contract requirements, you're free to purchase the ingredients that work best for your operation. In the next sections, we can take a closer look at a few of the benefits that you can take advantage of with the CattlePro.



# No Contracts

---

Many drug companies provide automated cattle feed mixers with exclusive contracts. These contracts can quickly become expensive, and it can make it difficult to optimize your ingredient mix, both for cattle development and for cost reduction. One of the biggest advantages of the CattlePro micromixing cattle feed machine is the ability to purchase drugs wholesale, including antibiotics, ionophores, beta agonists, and more. This gives you the freedom to choose the supplier with the right balance of quality and cost. You can also adjust your feed plan to optimize the growth and development of your cattle.

- ▶ Choose the most effective and cost-saving materials
- ▶ Optimize your feed mix
- ▶ Change suppliers at any time





# Accuracy

Hand-adding ingredients to the cattle feed mix can introduce a lot of error. Missing scoops or adding too many scoops, and then recording the ingredients used, all introduce chances to make an incorrect mix or create inaccurate records. The CattlePro uses an automated measurement system to weigh all ingredients exactly. It also uses a bar code scanning and tracking system to ensure the right ingredients are being used at the right time. Connected to a lot tracking system, this can also simplify record-keeping and improve accuracy. Every transaction is time- and date-stamped to create detailed reports of usage and production.

- ▶ No hand-adding ingredients
- ▶ Automated recording
- ▶ Automated lot tracking
- ▶ Time- and date-stamped transactions

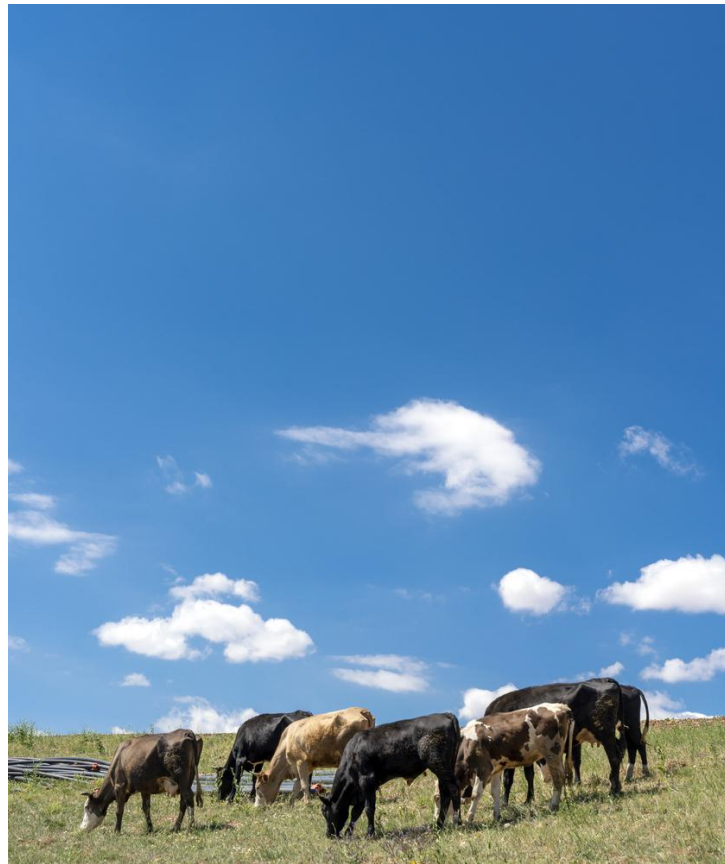


# Cost-Savings

---

As previously mentioned, you can take advantage of cost-savings from choosing your own ingredients supplier. But the CattlePro also offers additional cost-saving advantages. The pumping system for liquid ingredients uses less water than other systems, and the enclosure helps to prevent overspray. The CattlePro also measures ingredients precisely and helps to prevent errors, which prevents waste and extra costs. Maintenance and cleaning are also easy, and repairs require no proprietary parts.

- ▶ Precise material weighing
- ▶ No overspray
- ▶ Requires less water than other systems
- ▶ No proprietary replacement parts



# Safety

Safety is an important factor in any automated process. The fully enclosed, automated system helps to keep workers safer. By eliminating overspray and containing dust, workers don't have to breathe in or be exposed to any materials. There's also no direct contact with the mixer, which can help to prevent serious injuries. Finally, by using a series of bins and hoppers, there's less need for carrying heavy bags and scooping material repeatedly, which can help to avoid repetitive stress injuries.

- ▶ Completely enclosed system
- ▶ No risk of operator injury
- ▶ No dust or overspray
- ▶ Less risk of repetitive stress injuries compared to manual systems



# Speed

The CattlePro is customized to suit the needs of each operation, including the number of ingredients, amounts, and types. With the system custom-fitted to your operation, the filling, weighing, and mixing process is also optimized for time. The mixing and weighing process for different ingredients occurs simultaneously to speed up the overall process. Complete automation also eliminates the need for slow manual tasks, like hand-adding ingredients or making records by hand. With easy maintenance, cleaning and repairs, you can take advantage of quick operation in every respect.

- ▶ Automated mixing
- ▶ Simultaneous ingredient weighing
- ▶ Quick filling
- ▶ Easy cleaning
- ▶ Easy maintenance



# Easy to Implement

---

The CattlePro is designed to be easy to install and use. The system is pre-plumbed, pre-wired, and pre-programmed according to your feed requirements. This makes the system remarkably easy to install, and takes very little time. You can start using the system almost immediately.

- ▶ Pre-wired
- ▶ Pre-plumbed
- ▶ Pre-programmed
- ▶ Ready to go



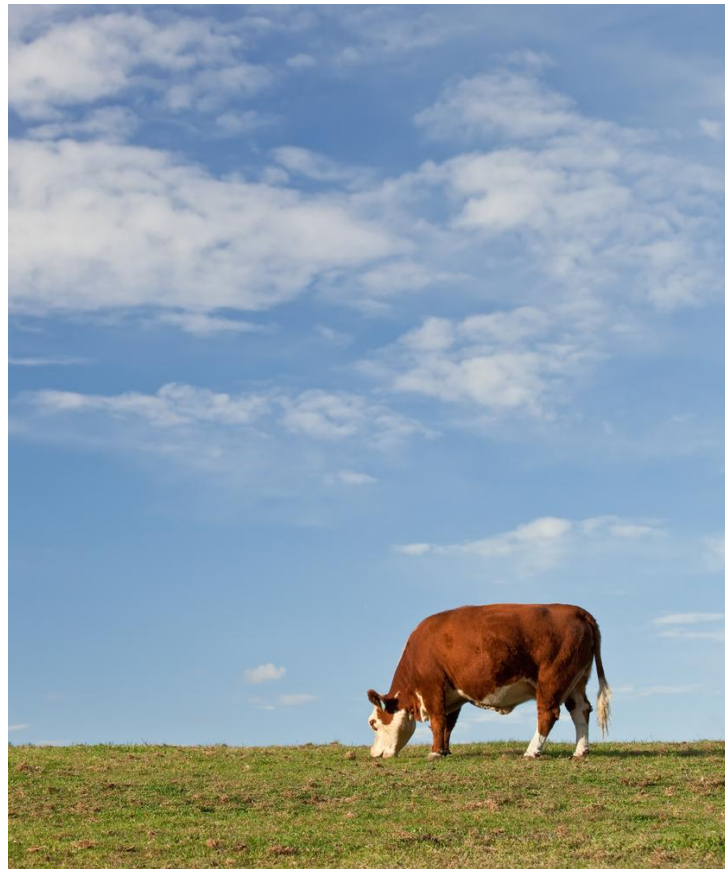


# Easy to Clean

---

Cleaning your system is important to maintaining feed quality. That's why we made the CattlePro feed mixing system modular and easy to deconstruct and clean. The flush hopper and conveyor can be separated from the machine, cleaned, and easily reattached. The separate scales for liquid and solid materials also help to make cleaning easier.

- ▶ Modular design
- ▶ Separate flush hoppers and conveyors during cleaning
- ▶ Separate scales for liquids and solids



# OPTIMIZE YOUR FEED MIXING

---

Are you curious about how the CattlePro might improve your feed mixing process? Tell us about your facility, your goals, and any questions you might have. We'll tell you more about the system, and how it might fit into your facility.

Get in Touch Today!



1201 North Fourth Avenue  
Lake Odessa, MI 48849 USA  
Ph: +1 (616) 374-1000  
Fax: +1 (616) 374-1010